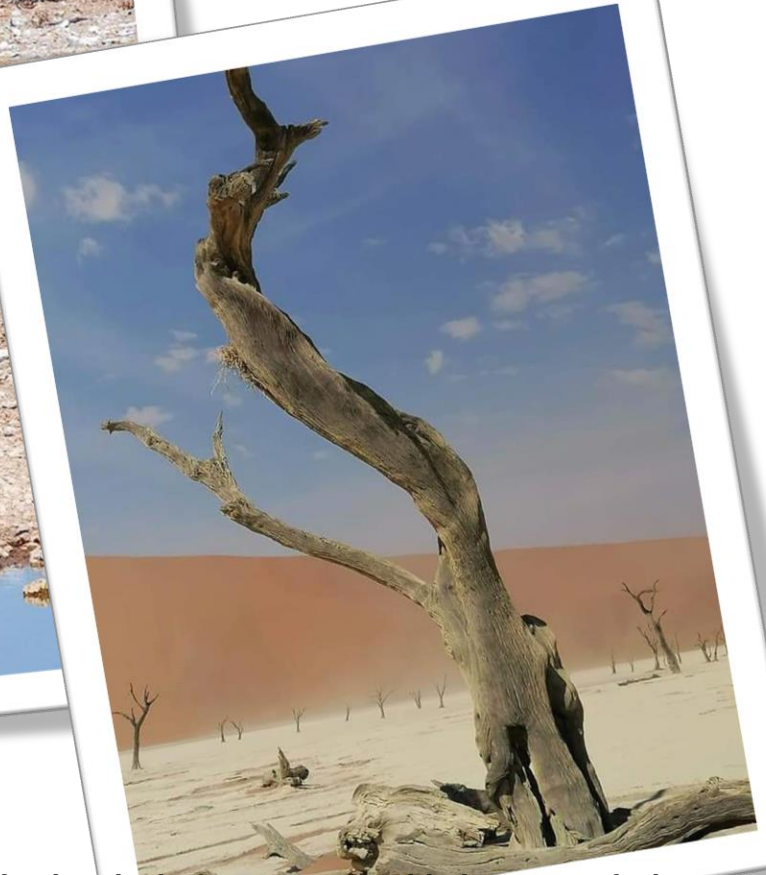
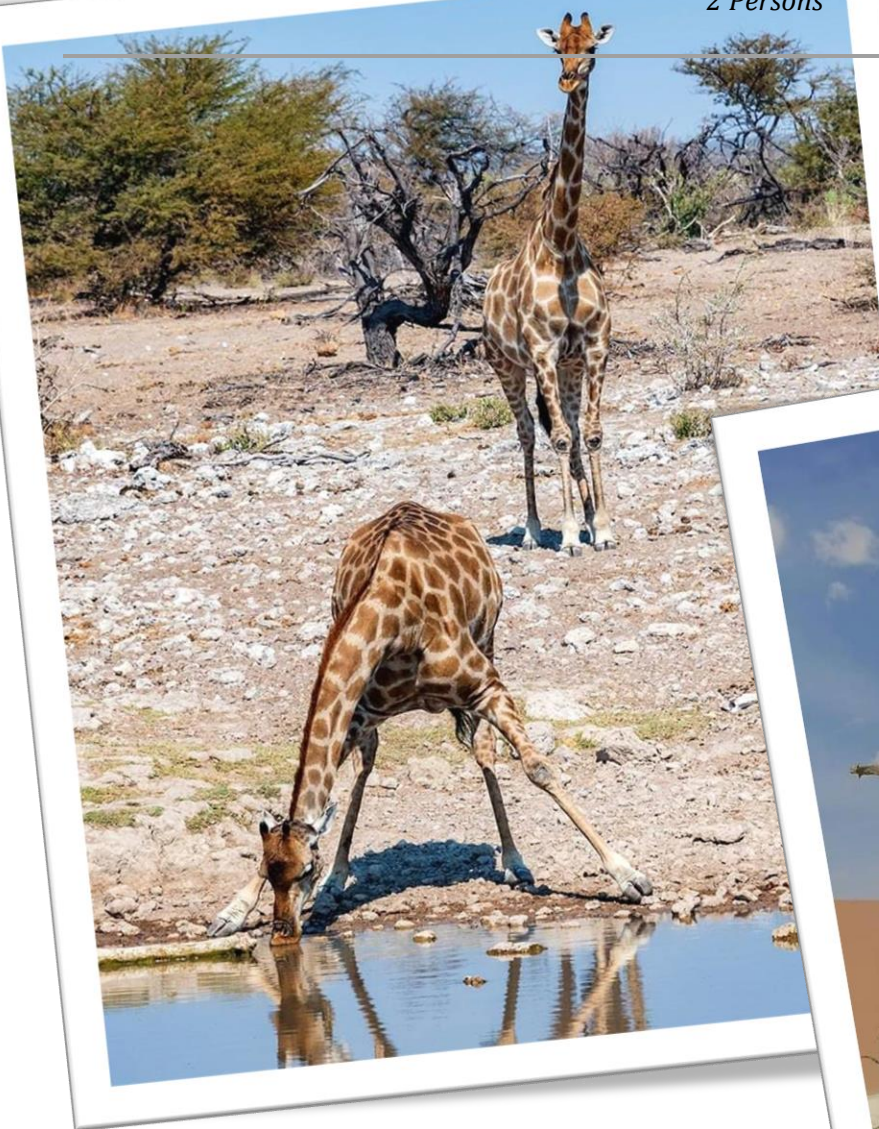


13 Day Budget Self-drive Camper

*Sesriem - Solitaire - Sossusvlei - Swakopmund - Walvis Bay - Skeleton Coast - Henties Bay - Twyfelfontein -
Palmwag - Etosha South - Etosha National Park - Onguma Game Reserve - Etosha East - Okonjima Nature Reserve
- Otjiwarongo*
13 Days / 12 Nights
2 Persons



Located in southwestern Africa, Namibia boasts a well-developed infrastructure, some of the best tourist facilities in Africa, and an impressive list of breath-taking natural wonders. Visitors can explore the capital of Windhoek and discover the lovely coastal town of Swakopmund boasting remnants of the country's German influence, reflected in the architecture, culture, cuisine and the annual Oktoberfest celebrations. To properly appreciate this extraordinary country, you will have to venture out of the cities to explore the remarkable natural landscapes Namibia has to offer. These include: the impressive Fish River Canyon; the vast Etosha National Park teeming with abundant wildlife, such as lions, desert-adapted elephants and the Hartmann's Mountain Zebra; the hauntingly beautiful Kalahari Desert; and of course the Namib Desert stretching for over 2000 km along the magnificent Atlantic Coast. Namibia is an ideal destination for travellers seeking an unforgettable African experience in a uniquely beautiful untamed wilderness.

Additional Tour Information

It is strongly recommended that you purchase comprehensive personal travel insurance before you start your safari. Travel insurance is for your own protection, and we consider it to be an essential part of modern international travel.

Maximum group size is 10 people, with a minimum of 4 participants. Transport for up to 5 people will be in a minibus and for 6 people and more in a specialised vehicle.

The style of safari is limited participation, you can pitch in to give the guide a hand with pitching and striking down your own tent. There will be a camp assistant who will accompany the guide depending on how big the group is to help with the other campsite chores. Your tour guide will do all the shopping, cooking, and day-to-day organization of the safari. Unless otherwise specified, **all safaris will be conducted in English.**

Our tents are canvas dome type, which are easy to assemble. The mattress we use are approximately 5 cm thick with its own mattress cover and each client has a camp chair with backrest.

Clients are limited to one soft, barrel type bag per person with maximum weight of 15kg, one medium sized hand luggage bag, one medium sized camera bag and a sleeping bag.

We suggest a sleeping bag range of "3 – 4 season". Sleeping bags can be hired by prior arrangement for a cost of N\$: 50.00 per 3 day trip. When selecting your clothing please be aware that Namibian summer temperatures (December - March) can reach 45°C and winter temperatures (June - September) can be as low as -5°C. The rainy season is between December and April.

All evening meals on camping safaris (unless stipulated) are cooked by your guide on an open fire. Salads and fresh vegetables will be served daily where readily available. Fresh fruit will also be supplied when possible. **We cater for vegetarians**, but please notify us prior to departure.

Namibia is a low-risk malarial destination, but we recommend seeking professional medical advice, enabling you to make informed decisions on personal malaria protection.

All tap water in Namibia has been purified or comes directly from boreholes and is safe to drink. In some areas the water can be brackish, your guide will advise you daily on this and where to purchase bottled mineral water.

Electrical plugs are 220 V and are 3 pin (round pin as opposed to square pin, the same as in South Africa). Adaptors can be purchased in Windhoek. It is possible to re-charge batteries at some campsites. The Namibian Dollar (N\$) has a fixed 1-1 exchange rate to the South African Rand (ZAR). ZAR notes and coins are legal tender in Namibia.

Airport transfers and pre-and-post safari accommodation can be arranged on request at an additional cost. It is customary in Namibia to tip 10% at restaurants. Your guide and assistant can be tipped at your own discretion, but we ask that the guide be tipped separately from your assistant.

Introduction

Start	Accommodation	Destination	Basis	Room Type	Duration
Day 1	Sesriem Oshana Campsite	Sesriem	SC	1x Campsite	2 Nights
Day 3	Prost Hotel Swakopmund	Swakopmund	B&B	1x Campsite	2 Nights
Day 5	Mile 108 Campsite	Skeleton Coast	B&B	1x Campsite	1 Night

DREAM HOLIDAY TOURS & SAFARIS

Experience New Adventures

Dreamholidaytours-safaris@outlook.com

+264816636041

Day 6	Madisa Campsite	Twyfelfontein	SC	1x Campsite	1 Night
Day 7	Hoada Campsite	Palmwag	SC	1x Campsite	1 Night
Day 8	Etosha Village Campsite	Etosha South	SC	1x Campsite	2 Nights
Day 10	Onguma Tamboti Campsite	Onguma Game Reserve	SC	1x Campsite	2 Nights
Day 12	Okonjima Campsite	Okonjima Nature Reserve	SC	1x Campsite	1 Night

Key

SC: Self Catering

B&B: Bed and Breakfast

Price

01st July 2022 – 31st October 2023

N\$ 37,800.00 per person sharing

Package includes

- Vehicle collection/drop off at accommodation
- Standard information package with detailed map
- Meet and greet
- Accommodation and meals as per itinerary
- Complimentary surprise from DHS on route
- Standard 4x4 double cab fully equipped

Vehicle includes:

- Theft and Collision Damage Waiver
- 2ND Additional Driver
- Unlimited mileage
- Airport Surcharge - Tourism Levy
- Value Added Tax at 14%
- Damage due to Sandblasting
- Tyre and rim damage, hubcaps
- Windscreen
- Camping equipment

Excluded

- Meals other than specified
- Additional activities
- Entrance fees to National parks
- Fuel

DREAM HOLIDAY TOURS & SAFARIS

Experience New Adventures

Dreamholidaytours-safaris@outlook.com

+264816636041

- Alcoholic beverages
- Soft drinks & bottled water
- Personal travel insurance and items of a personal nature
- International flights
- Airport taxes

Not included in the vehicle rate:

- Young Driver surcharge per day, per driver
- One way drop off charges
- Document Administration Fee (contact fee)
- Traffic Fine Handling Fee
- Claim Handling Fee
- Assessor's Fee Water and under-carriage damage to vehicles
- Cross border permits

Day 1

Sesriem Oshana Campsite, Sesriem



As there is no accommodation at Sossusvlei, visitors to this desert wilderness are likely to end up staying at Sesriem, 65 kilometres away, where camps and lodges serve as a base from which to explore the dunes. Sesriem Canyon, a deep chasm carved through the rocks by water, is a striking natural feature of the area that is best explored on foot. Stony walls rise up sharply on both sides of the canyon, while birds roost in its crags and lizards dart along the ledges. The canyon's name was coined when early settlers used it as a water source, using six lengths of leather ('ses riem – six thongs) tied together to lower buckets into the water at the base of canyon.)

Day Itinerary

Windhoek – Sesriem (312km)

Upon arrival a representative of the Car Rental Company will meet you at the airport and transfer you to their office in Windhoek, where you will collect and complete your vehicle documents. After collecting your vehicle, you will then be met by a consultant from Dream Holiday Tours & Safaris, that will take you through your program and hand you your information package.

DREAM HOLIDAY TOURS & SAFARIS

Experience New Adventures

Dreamholidaytours-safaris@outlook.com

+264816636041

Solitaire

Situated in the Khomas region of Central Namibia, the desert town of Solitaire serves as an oasis in the Namib Desert. There is not much to do or see in the small village of Solitaire, but it nevertheless, it is an important stop on the way to the ancient dunes of Sossusvlei as it provides the only petrol station, general store and post office between Sossusvlei and Walvis Bay. Solitaire also has a small bar and is renowned for its famous apple pie- said to be the best in Namibia. Home to a luxury desert lodge, a motel and a campsite, visitors can easily find comfortable accommodation in Solitaire. Enjoy a scenic sundowner with views of the spectacular Namib desert, hike and bike through the unspoilt natural scenery and visit the local Cheetah Sanctuary.



Overnight: Sesriem Oshana Campsite

Sesriem offers ten (10) self-catering camping facilities with each campsite having its own private toilet and shower, washup kitchenette with hot and cold water and 220V electricity. Campers have full access to the shop, bar, restaurant and swimming pool at Sesriem (NWR)



Basis

Self-Catering

Day 2

Sesriem Oshana Campsite, Sesriem

Day Itinerary

Sossusvlei full day

You have an early start to catch the soft light of sunrise over the desert. You can stop at the famous Dune 45, a beautiful star dune which reaches over 170 metres in height. If you feel fit enough to climb the dune, you surely will be rewarded with breath-taking views of the surrounding Namibian desert.

Overnight at Sesriem Oshana Camp

DREAM HOLIDAY TOURS & SAFARIS

Experience New Adventures

Dreamholidaytours-safaris@outlook.com

+264816636041

Recommended

Dune 45
Dead Vlei
Big Daddy 250m
Sesriem Canyon

Dune 45

Named for its location 45 kilometres past the town of Sesriem, Dune 45 is renowned for its elegant shape, which – along with its position close to the road – have earned it the distinction of ‘most photographed dune in the world’. If you’re not keen for the strenuous hike to the top of Big Daddy, Dune 45 is a more forgiving alternative, standing at only 80 metres and featuring a much gentler gradient.



Dead Vlei

This ancient clay pan was once an oasis, studded with acacias and fed by a river that suddenly changed course, leaving the earth to dry up along with the trees it previously supported. So dry were the climatic conditions that the trees never decomposed – instead they were entirely leached of moisture so that today, 900 years later, they remain as desiccated, blackened sentinels dotting the pan’s cracked surface. Surrounded by the red-pink dunes of the Namibia Desert, they create a surreal spectacle that is a photographer’s dream.



Big Daddy 250m

Big Daddy is the tallest dune in the Sossusvlei area. This magnificent dune is situated between Sossusvlei and Deadvlei and at 325 meters it dwarfs the other dunes. Should you want the ultimate bragging rights, take a lot of water and trek to the top of Big Daddy where you can look down onto Deadvlei.

At 325 meters, Big Daddy may be the highest dune in the Sossusvlei area, however it is not the highest in the Namib Desert. This honour is given to Dune 7, which has been measured at 388m. Dune 7 earned its name by being the 7th dune along the Tsauchab River.

DREAM HOLIDAY TOURS & SAFARIS

Experience New Adventures

Dreamholidaytours-safaris@outlook.com

+264816636041

Sesriem Canyon

Sesriem Canyon, a deep chasm carved through the rocks by water, is a striking natural feature of the area that is best explored on foot. Stony walls rise up sharply on both sides of the canyon, while birds roost in its crags and lizards dart along the ledges. The canyon's name was coined when early settlers used it as a water source, using six lengths of leather ('ses riem – six thongs) tied together to lower buckets into the water at the base of canyon.



Basis

Self Catering

Day 3

Prost Hotel Swakopmund, Swakopmund



Set along Namibia's spectacularly scenic coast, the seaside town of Swakopmund is known for its wide-open avenues, colonial architecture, and its surrounding otherworldly desert terrain. Founded in 1892 as the main harbour for German South West Africa, Swakopmund is often described as being more German than Germany. Now a seaside resort town, Swakopmund is the capital of the Skeleton Coast tourism area and has plenty to keep visitors happy. The quirky mix of German and Namibian influences, adventure options, laid-back atmosphere and cool sea breeze make it a very popular Namibian destination. Visitors can look forward to a number of exciting activities including: quad biking, horse riding, paragliding, fishing, sightseeing and fascinating desert tours.

Day Itinerary

Sesriem - Swakopmund (353km)

Today you leisurely depart Swakopmund back on the gravel road, with a quick stop at Solitaire where they sell the most delicious Apple Pie! On route you will also be passing the tropic of Capricorn sign and YES! You can stop

DREAM HOLIDAY TOURS & SAFARIS

Experience New Adventures

Dreamholidaytours-safaris@outlook.com

+264816636041

for a quick picture!! Walvis bay is our harbour town in which most of the water activities take place, Swakopmund is 30kms from Walvis bay.

Recommended

Tropic of Capricorn
Walvis Bay Lagoon

Walvis Bay

Situated along Namibia's spectacular coastline, just south of Swakopmund, Walvis Bay (Whale Bay) is a thriving town, Namibia's principal harbour and one of the country's most popular tourist centres. It is known for its natural lagoon, striking orange sand dunes and wealth of outdoor activities, including fishing, bird-watching, sailing, sandboarding, swimming, surfing and golf. Located just outside town is Dune 7, one of the largest sand dunes in the world, offering fantastic views from the crest for those with the energy to climb it. Visitors can look forward to a number of activities including: visiting the expansive green and pink salt pans dotted with flocks of flamingoes, and jumping on a boat trip to view seals colonies, dolphins and friendly pelicans, while enjoying champagne and oysters.



Tropic of Capricorn

Located just South of Walvis Bay in Solitaire, is the approximate latitude of the Tropic of Capricorn at 23.5 degrees South. The Tropic of Capricorn is one of the 5 major circles of latitude and the southernmost point of latitude from where the sun can be seen directly overhead. This point of latitude runs through many other countries such as Brazil, Mozambique and Australia to name a few.

Walvis Bay Lagoon

Walvis Bay's calm natural lagoon is a twitcher's paradise, teeming with roughly 50 species of seabirds, including vivid flocks of flamingos, bulky-billed pelicans and glossy black cormorants. It's also a popular spot for windsurfing, kitesurfing and kayaking, while the promenade stretching for three kilometres along the water's edge is a great place for a scenic stroll.



DREAM HOLIDAY TOURS & SAFARIS

Experience New Adventures

Dreamholidaytours-safaris@outlook.com

+264816636041

Overnight: Prost Hotel Swakopmund

Prost Hotel is situated in the heart of Swakopmund, giving access to the town's various and excellent restaurants. Our accommodation consist of 28 en-suit rooms, ranging from luxury, family to standard rooms. All rooms are equipped with 43" flat screen TV, own DSTV decoder, electronic laptop safe, tea/coffee station, telephone and hair dryer.



Basis

Bed and Breakfast

Day 4

Prost Hotel Swakopmund, Swakopmund

Day Itinerary

Swakopmund (accommodation)

Today you have a free day to explore and relax before heading out the next day. Walvis Bay is one of the richest and most important wetlands in southern Africa and home to many water birds including Great and Lesser flamingos, Damara terns, pelicans and avocets. You can also visit the salt works before returning to Swakopmund.

You can join in on optional activities offered in Walvis Bay. These various optional activities can also be prearranged or booked on arrival. These include a boat tour (with oysters and champagne), scenic flights and micro-light flights over the desert, fishing trips (either from the beach or a boat), quad-biking in the desert, sandboarding and skydiving.

Note that all extra activities in Swakopmund are subject to availability and are made at the client's own expense

Recommended

Catamaran Charters
Living Desert Tours
Sandwich Harbour 4x4

DREAM HOLIDAY TOURS & SAFARIS

Experience New Adventures

Dreamholidaytours-safaris@outlook.com

+264816636041

Catamaran Charters

The Catamaran Charters Team invites you aboard the 45ft Royal Cape Sailing Catamaran Silverwind, or the 60ft Simon Sailing Catamaran Silversand, or the 40ft Admiral Motorised Catamaran Silvermoon, to enjoy an adventure packed tour to Pelican Point and Walvis Bay's beautiful bay area.

The chances of encountering dolphins, whales, turtles, seals and Mola Mola (sunfish) make the search for the marine big 5 and adventurous tour by enjoying sparkling wine, fresh oysters and other mouth-watering snacks aboard the spacious and comfortable catamarans.



Living Desert Tours

The Living Desert Tour is a unique 4x4 adventure which specializes in bringing the desert to life while sharing the awesome beauty of the Namib Desert with travellers from all over the world. The coastal dune belt may seem barren and lifeless to many people, but in fact it is alive with a fascinating variety of little desert adapted animals, which are able to survive on the life-giving fog which consistently rolls in from the cold Atlantic Ocean.

Come see the Dancing White Lady Spider (*Carparachne aureoflava*) cartwheel 44 turns per second down a dune to escape the enemy. Admire the transparent Namib Dune Gecko (*Pachydactylus rangei*) with webbed feet that are equivalent to snow shoes. Learn about the different beetles and insects and how they survive in the dune desert. Follow in the tracks of a legless Lizard (*Fitsimmon's Burrowing Skink*), observe Sand Diving Lizards (*Merops Anchieta*) dancing on the hot sand, Sidewinder Snakes (*Perinquey's Adder*), Desert Chameleons and many more fascinating creatures. Learn about the geology, structure and formation of the desert, and admire the vast and beautiful landscapes while enjoying a scenic dune drive combined with fun and adrenalin.



Sandwich Harbour 4x4

Sandwich Harbour 4x4 is a safari company based in Walvis Bay, Namibia, offering 4x4 excursions to Sandwich Harbour, Marine Dune Days, Kayak Combos and Bird Watching Activities in the Wetlands around Walvis Bay.

DREAM HOLIDAY TOURS & SAFARIS

Experience New Adventures

Dreamholidaytours-safaris@outlook.com

+264816636041



Basis

Bed and Breakfast

Day 5

Mile 108 Campsite, Skeleton Coast



Stretching from the Swakop River to southern Angola, the Skeleton Coast is known as the 'Land God Made in Anger' and is remoteness at its best. Thousands of miles of sandy desert dotted with shipwrecks meet with the cold waters of the Atlantic and somehow an amazing array of wildlife and flora manages to survive in this harsh but beautiful environment. Ocean fog creeps over the shoreline caused by the warm dry air of the Namib Desert colliding with the cold Benguela current. This otherworldly area is home to a diversity of wildlife including seabird colonies, Cape fur seals, zebra, gemsbok, desert-adapted elephant, lion and much more. Surfing enthusiasts are drawn to these powerful waves and photographers flock from around the globe to snap a shot of this eerie shipwreck graveyard and for the unrivalled maritime photographic opportunities. This coast is desolate but breathtakingly beautiful.

Day Itinerary

Swakopmund – 108 Mile Camp (164 km)

Today you have a short drive towards the skeleton coast of Namibia, with a quick optional visit at the cape fur seals.

2nights stay is recommended if the clients/client is interested in fishing.

DREAM HOLIDAY TOURS & SAFARIS

Experience New Adventures

Dreamholidaytours-safaris@outlook.com

+264816636041

Recommended

Cape Cross Seal Colony

Henties Bay

Situated along the magnificent Skeleton Coast in Namibia, the resort town of Henties Bay is a popular holiday destination known for its year-round fishing opportunities. This calm, tranquil seaside spot picks up during the December festive season. It is home to a variety of hotels, guesthouses, holiday houses and numerous lively bars, cafes, and restaurants. Visitors can look forward to a variety of spectacular activities including: visiting the seal colony of Cape Cross, walking along deserted beaches, jumping on an angling boat trip, or getting involved with a thrilling 4X4 excursion into the desert. Don't miss the opportunity to play a round of golf on the quirky golf course, set in a riverbed, for one of a kind golfing experience in the desert.



Cape Cross Seal Colony

This colony of Cape Fur Seals is one of the largest in the world, home to approximately 80 000 to 100 000 of these so-called 'seals', which are in fact a species of sea lion. Day trips to the colony are offered and the seals can be viewed from a walkway at a distance of roughly 200 metres.



Overnight: Mile 108 Campsite

Basis

Bed and Breakfast

DREAM HOLIDAY TOURS & SAFARIS

Experience New Adventures

Dreamholidaytours-safaris@outlook.com

+264816636041

Day 6

Madisa Campsite, Twyfelfontein



Set in the Kunene Region of north-western Namibia, Twyfelfontein is a spectacularly scenic area, featuring one of the largest and most important concentrations of rock art in Africa. The name ‘Twyfelfontein’ translates to ‘Fountain of Doubt’, which refers to the perennial spring situated in the impressive Huab valley flanked by the slopes of a sandstone table mountain. It was this spring that attracted Stone Age hunters over six thousand years ago, and it was during this time that the extensive group of rock engravings and paintings were produced. Visitors can look forward to basing themselves at some wonderfully shady campsites along the Aba-Huab riverbed, while exploring over thirty different sites of these sacred records of ritual practices relating to traditional hunter-gatherer communities.

Day Itinerary

108 Mile Camp – Madisa Campsite (287 km)

This morning you are headed to the beautiful Damaraland. Nestled in rolling boulders of a granite outcrop, Madisa Camp is conveniently situated a ten-minute drive from Twyfelfontein Rock Engravings, within walking distance of the Damara Living Museum and the Huab River Valley.

Enjoy the beautiful Landscape.

Recommended

Scenic Game Drive and Sundowner

Scenic Game Drive and Sundowner

This Drive leaves from camp and meanders around the surrounding areas where sightings of the Elephant, Giraffe, Zebra and other game can be spotted.

DREAM HOLIDAY TOURS & SAFARIS

Experience New Adventures

Dreamholidaytours-safaris@outlook.com

+264816636041

Overnight: Madisa Campsite

Madisa Camp is situated on the D2612 road to Twyfelfontein, a very popular route. The camp is hidden between amazing rock formations which are scattered with Bushman Paintings and has privy to an ancient Desert Elephant route that often gets visited by these beautiful giants.

Each spacious campsite has an exquisite view of the Gauntegab River bed and rock formations. The campsites have individual ablution facilities situated on stilts hidden in the tree tops. The braai facilities also double up as a heater (donkey system) for hot running water at each open air shower. The camp sites are shaded by large Mopane trees and have a low rock wall around each site.

The swimming pool and bar area are very welcoming after a long day and give you a chance to rejuvenate and enjoy your surroundings. It's also nice to meet fellow travelers and share tails around a communal camp fire at night while the sky puts on a breath taking show of stars.

Basis

Self Catering

Day 7

Hoda Campsite, Palmwag



Palmwag is a nature reserve idyllically located along a palm-lined tributary of the Uniab River. Water is scarce in this area, so the river's presence often lures elephants closer to the camps. Palmwag is situated halfway between Swakopmund and Etosha, and is the ideal base from which to see the sights of the Kunene region or embark on one of the many local hiking trails. The reserve is notable for its unusual species of palm tree, the *hyphaena pertesiana*, and for being home to the largest population of south-western black rhinos in Africa. Animal lovers can also get a peek at leopard, lion, cheetah, mountain zebra, Angolan giraffe, springbok, kudu, and African bush elephant.

Day Itinerary

Madisa Camp – Hoda (145 km)

Today you leisurely departing to Hoda Campsite. With your second night in Damaraland enjoy the scenic drive up the Grootberg pass. On route to Hoda, you can visit the Rock engravings site from where you can leisurely depart to Hoda.

DREAM HOLIDAY TOURS & SAFARIS

Experience New Adventures

Dreamholidaytours-safaris@outlook.com

+264816636041

Optional

Damara Culture Tour

Recommended

Twyfelfontein Rock Art

Organ Pipes

Damara Culture Tour

Guests will be guided through surrounding conservancy farms on foot, visiting a couple of authentic homesteads of the Damara people which allows them with the exclusive opportunity to spend time with their hosts understanding their origins, cultures, traditions and their approach to human wildlife conflict farming within the harsh desert conditions. Damara Guided walks at Hoada Campsite. ^[L]_[SEP]

Your guide will take you to local households to appreciate how those people of Bantu origins who are related to the Himba and Herero build houses, prepare their food, heal with traditional medicine and manufacture artefacts for sale. Get those comfortable shoes out as it is about an hours hike to the farm and another hour back. Depending on the time spent on the farm, you can expect to be back at your camp after 3 hours.



Twyfelfontein Rock Art

Twyfelfontein is a World Heritage Site boasting one of the richest rock art concentrations in Africa. Thousands of tourists come to this site each year to view some 2, 500 Stone Age rock engravings. The area is home to 17 rock art sites, which collectively encompass 212 engraved stone slabs. There are an additional 13 sites displaying rock paintings.



DREAM HOLIDAY TOURS & SAFARIS

Experience New Adventures

Dreamholidaytours-safaris@outlook.com

+264816636041

Organ Pipes

The Organ Pipes are located near Twyfelfontein and a few kilometres to the Burnt Mountain in Damaraland, Namibia. It is a 100m long feature of unusual dolomite columns these rocks were formed by volcanic activity and after erosion, the rocks have remained in the form of organ pipes.

Overnight: Hoada Campsite

Hidden among large grey granite boulders and Mopani trees, Hoada Campsite offers travellers a serene home in the wilderness of Namibia. Accommodation includes six luxury campsites with ample designated areas for tents or vehicles with rooftop tents, and permanent tents are available for hire. Each campsite boasts its own braai area and kitchen facilities with running water. There are also ablution facilities, with flush toilets, hidden amongst the rocks.



Basis

Self Catering

Day 8

Etosha Village Campsite, Etosha South



Located just south of the boundary of Etosha National Park in northwestern Namibia, Etosha South makes up the southern region of this wild paradise. Ongava Private Game Reserve shares the southern boundary with Etosha National Park and offers an array of luxury lodges overlooking picturesque landscapes dotted with abundant wildlife. The national park can be accessed via the southern entrance at Andersson's Gate. Visitors can catch a glimpse of a variety of wildlife including: lion, giraffe, elephant, white and black rhino, and a multitude of plains game. Popular activities include: game drives, tracking rhinos on foot, guided nature walks, or watch the sunset over this magnificent landscape.

DREAM HOLIDAY TOURS & SAFARIS

Experience New Adventures

Dreamholidaytours-safaris@outlook.com

+264816636041

Day Itinerary

Hooda – Etosha Village Campsite (299 km)

This morning you leave behind the beautiful and breath-taking Damaraland, as you are headed to the Great Etosha National Park, with a quick stop at the Himba Village just outside Kamanjab. On-route to Etosha you will pass through the towns of Kamanjab and Outjo to pick up fresh supplies.

Overnight at Etosha Village situated just outside the park at the Galton Gate, entrance to the National Park.

Recommended

Otjikandero Himba Orphanage Village

Otjikandero Himba Orphanage Village

Otjikandero Himba Orphanage Village is located close to the local Kamanjab cattle farm in Himba Village. The village is inhabited by Himba kids, who are taken care of by volunteer mothers. All the children are raised in the traditional way, although a few of them have been slightly westernised because of the school they attend. Otjikandero Himba Orphanage Village is funded by the money received from tours to the village. Funds are used for medical purposes, food and other basic needs. Tourists will have the opportunity to see the Himba people in their natural environment as well as observe their culture. Excellent photo opportunities are also available.



Overnight: Etosha Village Campsite

The Etosha Village Camp Site is nestled in the spectacular green and gold Mopani forests surrounding Etosha National Park, and caters for both Groups as well as Individual travellers.

The 4 Individual Camp Sites are also equipped with Power Outlets, Running Water, Lights, Barbeque and a well-kept shared ablution.

Inspiring cuisine can be enjoyed at the Etosha Village Restaurant situated walking distance from the Camp Site. On-site facilities include swimming pools and a bar area with a big-screen television as well as a fully stocked utility and curio shop. Guided excursions to Etosha and sundowner drives can also be booked at reception.

DREAM HOLIDAY TOURS & SAFARIS

Experience New Adventures

Dreamholidaytours-safaris@outlook.com

+264816636041



Basis

Self Catering

Day 9

Etosha Village Campsite, Etosha South

Day Itinerary

Full Day Game Drive

This morning you have fun filled game drive day, you the whole day to visit various waterholes on the southwestern side of Etosha.

Recommended

Etosha Game Drive

Okaukuejo Water Hole

Etosha South

Located just south of the boundary of Etosha National Park in northwestern Namibia, Etosha South makes up the southern region of this wild paradise. Ongava Private Game Reserve shares the southern boundary with Etosha National Park and offers an array of luxury lodges overlooking picturesque landscapes dotted with abundant wildlife. The national park can be accessed via the southern entrance at Andersson's Gate. Visitors can catch a glimpse of a variety of wildlife including: lion, giraffe, elephant, white and black rhino, and a multitude of plains game. Popular activities include: game drives, tracking rhinos on foot, guided nature walks, or watch the sunset over this magnificent landscape.



DREAM HOLIDAY TOURS & SAFARIS

Experience New Adventures

Dreamholidaytours-safaris@outlook.com

+264816636041

Etosha Game Drive

Game drive through Etosha National Park searching for predators, plains game, reptiles & birds. Game drives are conducted in custom built safari vehicles with a pop-up roof and large opening windows to maximize photographic opportunities. Depending on the time of year, these game drives take many different routes, but most often focus around the waterholes where you are most likely to see a variety of wildlife taking the chance to get a drink and swim.



Basis

Self Catering

Day 10

Onguma Tamboti Campsite, Onguma Game Reserve



Situated east of Etosha, bordering Fisher's Pan, Onguma Game Reserve is one of Namibia's best-kept secrets. The reserve offers visitors the opportunity to experience Africa in all her beauty and diversity. Onguma Game Reserve features over 34000 hectares of protected land scattered with a variety of wildlife including plains game, black rhino, kudu, giraffe, zebra, lion, cheetah, leopard and more than 300 bird species. The seasonal rains attract thousands of migrating birds to the Fisher's Pan wetland area. The neighbouring Etosha National Park is home to a rich array of wildlife, including four of the Big 5. Visitors can enjoy game drives, guided walks and rhino research drives within the private reserve as well as wildlife safaris into Etosha National Park to view abundant game in the largest national park in Namibia.

Day Itinerary

Etosha Village – Onguma (Full day Game Drive)

DREAM HOLIDAY TOURS & SAFARIS

Experience New Adventures

Dreamholidaytours-safaris@outlook.com

+264816636041

This morning you leisurely depart to Onguma, through the Etosha National Park. This will be a full day Game drive through the park visiting various waterholes on route to Onguma situated on the eastern gate of Etosha.

On this full day game drive quest, you will be passing through Halali on route to Namutoni, Halali is the middle resort of the park and the right lunch spot for the day. You can use the lodge amenities while lunching there, a quick swim would be delightful.

Onguma Tamboti Campsite just outside the Von Lindequist Gate entrance to Etosha National Park.

Recommended

Etosha Pan

Halali Resort

Strategically located halfway between Okaukuejo and Namutoni, Halali is situated at the base of a dolomite hill, amongst shady Mopane trees. A flood-lit waterhole which is viewed from an elevated vantage point provides exceptional wildlife viewing throughout the day and into the night.

Accommodation is provided in family chalets, two and four bed bush chalets and double rooms - all converted with large sliding doors to the outside, to allow visitors to experience and benefit from the peace and tranquility of the natural surroundings. Other facilities include a restaurant, bar, shop, swimming pool, kiosk and camping facilities.



Etosha Pan

Aeons ago, Etosha Pan was the bed of a vast lake; today what remains is a glittering, silvery-green salt pan that stretches across roughly 5000 square kilometres. Etosha is protected by the Etosha Pan National Park surrounded by savannah plains and woodlands supporting large herds of elephants. When dry, the pan sustains little life except for the algae that gives it its distinctive colour, and migratory birds that use it as a pit stop, but with heavy rain it becomes a shallow lake where flamingos breed, pelicans wade and feed, and a variety of mammal species come to quench their thirst, including leopards, lions, white rhinos, hunting dogs and antelopes.



DREAM HOLIDAY TOURS & SAFARIS

Experience New Adventures

Dreamholidaytours-safaris@outlook.com

+264816636041

Overnight: Onguma Tamboti Campsite

The 15 sites are all nestled in the trees of the Onguma Reserve, and each camper is ensured privacy and space to enjoy the bush. Each campsite has a private ablution facility with spacious shower room, separate toilet and covered washing-up areas with lots of space to unpack and organize. Each unit also has ample plugs to ensure cooler boxes keep cool and cameras get charged.

There is a stunning main area with a restaurant where guests can enjoy a hearty meal while looking out across the waterhole. The supply store stocks essentials and the deep verandas ensure there is shade to relax in.



Day 11

Onguma Tamboti Campsite, Onguma Game Reserve

Day Itinerary

This morning you have yet another day of full of Game driving Adventure! Visit various waterholes on the Eastern side of the park, you might spot Game that you didn't see on the southern side. Alternatively, you can do optional activities with the Lodge.

Recommended

Onkolo Hide
Massage Therapy
Bush Walks

Onkolo Hide

Onguma's fabulous new water-level hide affords guests a great opportunity to calmly sit and enjoy nature unobserved. Amateur and professional photographers alike love the angles and light from this equipped hide.

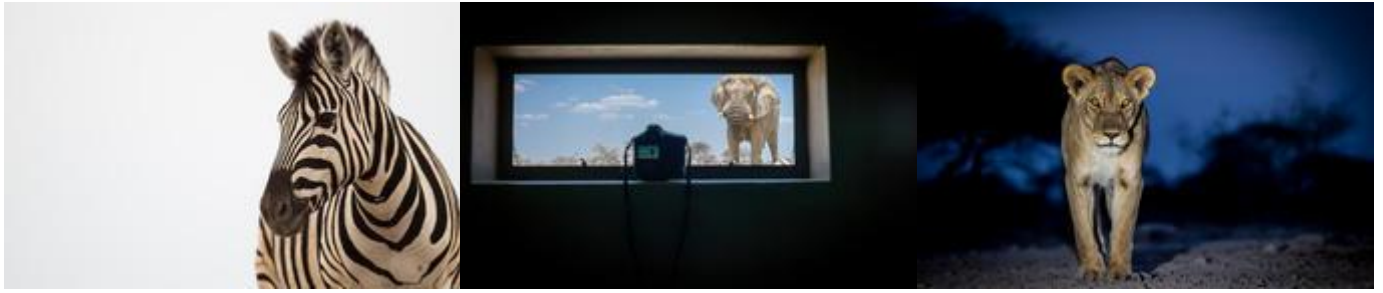
There is a small ablution facility nearby, benches from which to view the surroundings and lots of windows and vantage points for creative camera angles.

DREAM HOLIDAY TOURS & SAFARIS

Experience New Adventures

Dreamholidaytours-safaris@outlook.com

+264816636041



Massage Therapy

Johan, our resident therapist, is a professional massage therapist with over 15 years experience, having lived and worked at renowned Wellness Centres in Asia and Africa. His passion for and dedication to massage therapy originated in the East, where he was trained and educated from the best teachers in their respective fields. Having the opportunity to spend considerable time with monks in Thailand, has also led him to incorporate focused awareness into his massage therapies.



Bush Walks

Africa takes on a new perspective when you experience it on foot as the first explorers did. A bush walk is a unique physical, mental and spiritual adventure through nature. Experience the sights, smells and sounds of the Namibian bush by conducting an early morning leisurely walk accompanied by one of our experienced armed rangers.



Day 12

Okonjima Campsite , Okonjima Nature Reserve

DREAM HOLIDAY TOURS & SAFARIS

Experience New Adventures

Dreamholidaytours-safaris@outlook.com

+264816636041



OKONJIMA NATURE RESERVE

Midway between the spectacular Etosha National Park and the capital city of Windhoek, lies the well-known Okonjima Nature Reserve. The 22 000 ha nature reserve is home to AfriCAT, a carnivore sanctuary, which gives the captive cats a second chance to be released back into the wild and become completely independent hunters in a protected area right in the middle of commercial cattle farmland. Visitors can enjoy a stay at a variety of excellent accommodation options including everything from luxury villas to secluded camping. Enjoy thrilling cat tracking guided safaris, leopard-spotting, off-road night drives and learn about local San culture along the Bushmen trail.

Day Itinerary

Onguma – Okonjima (349km)

Today you leave behind the Great Etosha National Park with its amazing Wildlife experiences!!!! Your drive today will be to Okonjima Nature Reserve home of the Africat Foundation.

Otjiwarongo

Otjiwarongo – meaning ‘the place of fat cattle’ – is a tranquil, German-influenced town with numerous lodging options, shops and other amenities, making it ideal for a stopover en route to Windhoek, Etosha National Park and the Waterberg Plateau. Points of interest include a good craft market, the Cheetah Conservation Fund and the Crocodile Ranch, where visitors can view these fascinating reptiles and, if they fancy, sample a selection of crocodile meat dishes at the ranch restaurant.

Otjiwarongo

Otjiwarongo – meaning ‘the place of fat cattle’ – is a tranquil, German-influenced town with numerous lodging options, shops and other amenities, making it ideal for a stopover en route to Windhoek, Etosha National Park and the Waterberg Plateau. Points of interest include a good craft market, the Cheetah Conservation Fund and the Crocodile Ranch, where visitors can view these fascinating reptiles and, if they fancy, sample a selection of crocodile meat dishes at the ranch restaurant.



DREAM HOLIDAY TOURS & SAFARIS

Experience New Adventures

Dreamholidaytours-safaris@outlook.com

+264816636041

Overnight: Okonjima Campsite

Situated halfway between the capital Windhoek and the Etosha National Park, the 55,000 acre Okonjima Game Reserve has some of the best accommodation in Namibia, but the highlight has to be the cheetah and leopard safaris.

The Campsite at Okonjima is nestled amongst the Omboroko mountains. The 4 exclusive campsites, all share a private swimming pool.

Each Private Campsite offers:

Private shower/s (incl. hot water),

Private flush toilet/s,

A washing-up area under a roof with a power point to charge batteries and a light.

A viewpoint for sundowners.

1 fixed light per campsite for cooking & 1 plug point will be available for charging of fridges, cameras, cell phones etc.



Basis

Self Catering

DREAM HOLIDAY TOURS & SAFARIS

Experience New Adventures

Dreamholidaytours-safaris@outlook.com

+264816636041

Day 13

End of Itinerary

Day Itinerary

Okonjima - Windhoek (219 km)

This morning you are headed back to civilization,

Just before reaching Windhoek, you can stop for handmade Namibian/African craft in the small town of Okahandja home to Namibia's largest wood-carving market.

You are due back in the city late afternoon. Drop the vehicle off at the car rental and they will transfer you to the airport or to your accommodation.

Thank you for trusting us to plan your memorable experience to Namibia 😊

Recommended

The AfriCat Foundation

The AfriCat Foundation

The AfriCat Foundation was founded in the early '90s and formally registered as a non-profit organisation in August 1993. The Foundation has since grown significantly and what started out primarily as a welfare organisation, has over the years, identified the need to focus on education and research, as being essential to accomplishing our mission – the long-term conservation of Namibia's large carnivores.



End of Safari

DREAM HOLIDAY TOURS & SAFARIS

Experience New Adventures

Dreamholidaytours-safaris@outlook.com

+264816636041